

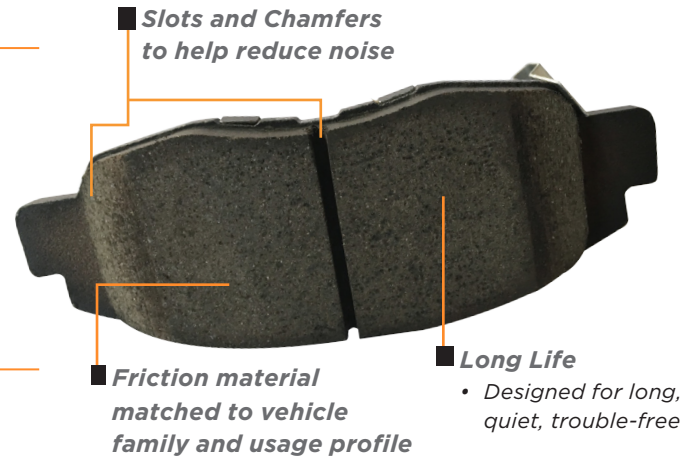
## BRAKE PADS AND COATED ROTORS

### A Trusted Relationship Just Got Better

Omnicraft is the newest member of the Ford family of parts offering affordable, reliable parts designed for non-Ford repairs. With over a century of parts heritage to build upon, Omnicraft is a quality choice for your business.

### Omnicraft Brakes

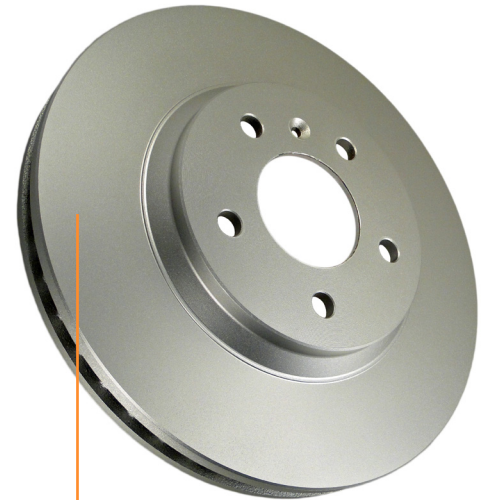
- Available for most non-Ford/Lincoln vehicles
- Delivers quality fit and competitive pricing
- Offers industry-comparable warranty
- Convenient one stop availability from Ford
- Tested to provide performance and long-life reliability



### Omnicraft Brake Pads

Friction material matched to vehicle family & usage

- Ready to install out of the box
  - Ceramic pads are formulated for:
    - High heat tolerance with little fade
    - Quiet and low dusting braking performance
  - Semi-metallic pads are formulated for:
    - High heat absorption pulls heat out of the braking system
    - Consistent braking performance with excellent cold bite



- *High Carbon casting*
- *Corrosion resistance*
  - *Low fade performance*

### Omnicraft Rotors & Drums

- GG15HC formulated high carbon casting† for:
  - Enhanced heat dissipation and extended brake life
  - High resistance to thermal cracking and fade
  - Low noise propensity and resistance to brake judder
- Rotor Coating for:
  - Corrosion prevention and increases rust resistance
  - Clean appearance for open wheels

**OMNICRAFT™**  
LABOR WARRANTY

**UP TO \$150**  
LABOR REIMBURSEMENT\*

**LIMITED LIFETIME**  
UNLIMITED MILEAGE\*\*

Brake Pads

**OMNICRAFT™**  
LABOR WARRANTY

**UP TO \$150**  
LABOR REIMBURSEMENT\*

**2 YEARS UNLIMITED MILEAGE\*\***

Brake Drums

**OMNICRAFT™**  
LABOR WARRANTY

**UP TO \$150**  
LABOR REIMBURSEMENT\*

**3 YEARS UNLIMITED MILEAGE\*\***

Brake Rotors



\*Limited labor costs. \*\*See seller for limited warranty details. Defect only. Original purchaser and receipt required. Excludes towing. Parts included. Labor limited to 2 yrs.

†Hub rotors made from industry standard G3000 cast iron