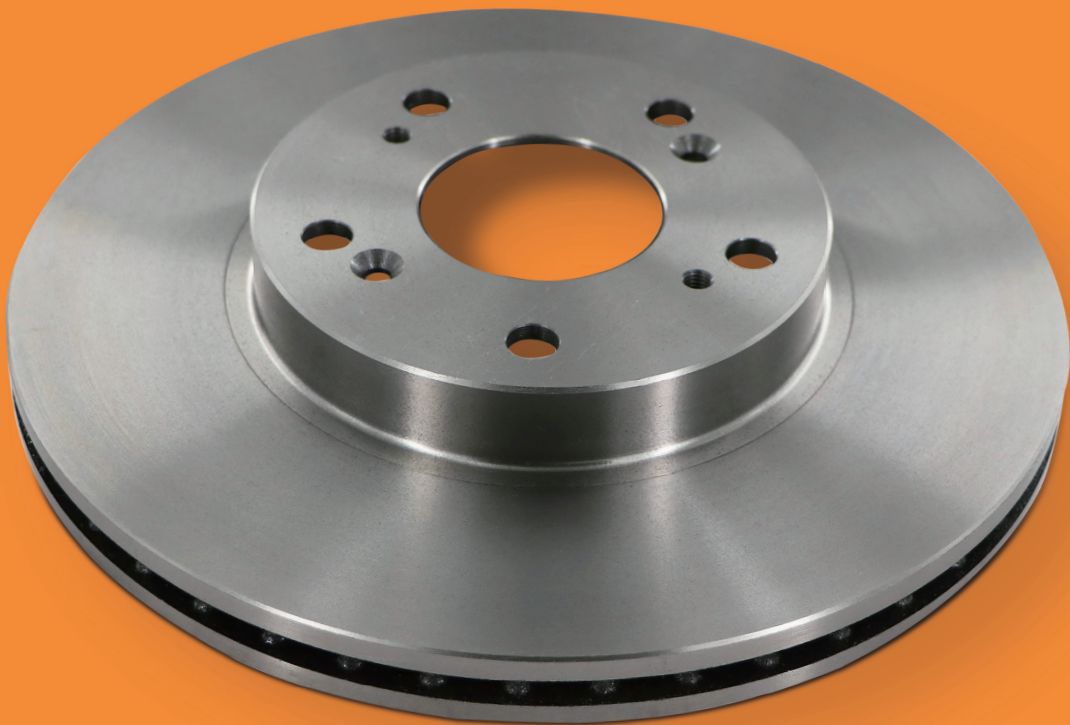


Brake Rotors Product Catalogue



Omnecraft™

BRAKE ROTORS

Omnecraft is the newest brand in the Ford parts lineup, offering affordable, reliable parts designed for non-Ford repairs and backed by Ford Motor Company. Omnicraft offers maintenance & light repair parts including filters and brake parts. Additional product lines are under development to meet the needs of different applications.

Your benefits at a glance

Omnecraft is your new opportunity to get into the parts game for non-Ford vehicles in your area. With Omnicraft, your customers aren't only getting the quality parts they need, you're also giving them:



Confidence

Omnecraft is the newest member of Ford family of parts and provides a high-quality solution for non-Ford vehicles. Backed by Ford Motor Company and with over a century of parts heritage to build upon, Omnicraft is sure to give your customers confidence and peace of mind in their choices.



Competitive pricing

The competitively-priced Omnicraft range makes no compromises on quality, fit and performance.



Quality

As part of the Ford family of parts, Omnicraft comes fortified with the reliable Ford brand heritage and quality guarantee.



Convenience

Find the parts you need for Ford and non-Ford in one place, helping you get jobs done faster and keep your customers satisfied.

Omnecraft brake rotors features



Engineered for reliable quality and stable performance



Manufactured with multiple alloys for optimum heat dissipation



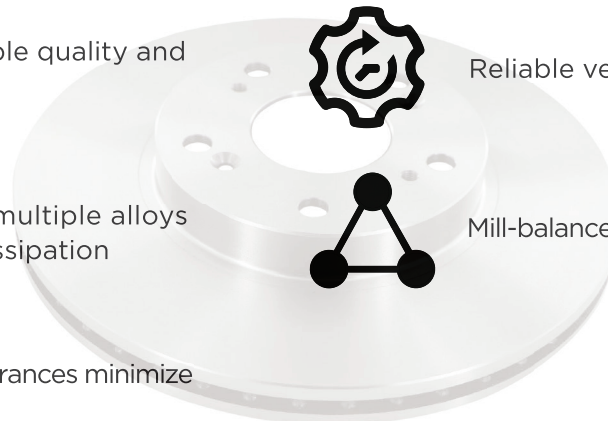
Precise machining tolerances minimize brake shudder



Reliable vehicle braking power



Mill-balanced for proper rotor function



BRAKE ROTORS

Application Data For Domestic And Import Passenger Cars And Light/Medium Trucks



Omnicraft™

Make	Model	Year (from)	Year (till)	Stroke capacity (ltr)	Fuel type	Omnicraft Part Number Front Brake Rotors	Omnicraft Part Number Rear Brake Rotors
HYUNDAI	Accent	2005-11	2010-11	1.6	Petrol	JAMZIV125AM	JAMJ2C203AAA
		2010-11	2018-06	1.4	Petrol	JAMZIV125BZ	-
		2010-11	2018-06	1.4	Petrol	JAMZIV125BZ	-
		2011-02	2018-06	1.6	Petrol	JAMZIV125BZ	-
	Elantra	2006-06	2011-06	1.6	Petrol	GAMZIV125FV	GAMZIV125Z
		2011-01	2016-12	1.8	Petrol	JAMZIV125CN	GAMZIV125GR
		2011-06	2015-08	1.6	Petrol	JAMZIV125CN	GAMZIV125GR
		2015-10	2018-06	2	Petrol	JAMZIV125CN	GAMZIV125GR
	H1	2016-02	2018-06	1.6	Petrol	JAMZIV125CN	GAMZIV125GR
		2007-09	2018-06	2.4	Petrol	JAMJ2C502BZA	JAMJ2C203BBA
	Santa Fe	2012-09	2018-06	2.4	Petrol	-	GAMZIV125GQ
		2010-11	2014-12	2.4	Petrol	GAMZIV125GU	Not applicable
Sonata	2014-06	2018-06	2	Petrol	GAMZIV125GU	GAMZIV125Z	
	2014-06	2018-06	2	Petrol	JAMZIV125CF	GAMZIV125Z	
	2005-01	2010-12	2.4	Petrol	GAMZIV125GT	GAMZIV125GK	
ISUZU	D-Max	2003-06	2012-06	3	Diesel	JAMJ2C502JA	-
		2012-04	2018-06	2.5	Diesel	JAMJ2C502UA	-
		2012-04	2018-06	3	Diesel	JAMJ2C502UA	-
KIA	Carnival	2006-09	2015-06	2.7	Petrol	JAMJ2C502BDA	JAMJ2C203ABA
	Cerato	2010-03	2013-06	2	Petrol	GAMZIV125FY	GAMZIV125GP
	Rio	2005-03	2011-12	1.4	Petrol	JAMZIV125AM	JAMJ2C203AAA
2011-09		2018-06	1.4	Petrol	JAMZIV125BZ	-	
NISSAN	Pick Up (D22)	2002-03	2018-06	2.5	Diesel	JAMZIV125B	-
		2012-11	2018-06	2.4	Petrol	JAMZIV125P	-
		2012-11	2018-06	2.4	Petrol	JAMZIV125A	-
	Sunny EX	2002-08	2016-03	1.6	Petrol	GAMZIV125CJ	-
TOYOTA	Aurion	2006-03	2011-09	3.5	Petrol	JAMZIV125CM	GAMZIV125EY
		2012-11	2018-03	3.5	Petrol	JAMZIV125CY	GAMZIV125EY
	Camry	2006-01	2011-09	2.4	Petrol	JAMZIV125CM	GAMZIV125EY
		2011-09	2018-06	2.5	Petrol	JAMZIV125CM	GAMZIV125EY
		2012-01	2018-06	2.5	Petrol	JAMZIV125CY	GAMZIV125EY
	Corolla	2006-11	2013-11	1.4	Petrol	JAMJ2C502BFA	JAMJ2C203ACA
		2007-01	2014-07	1.6	Petrol	JAMJ2C502BFA	JAMJ2C203ACA
		2007-03	2014-07	1.8	Petrol	JAMJ2C502BFA	JAMJ2C203ACA
		2007-12	2014-07	1.8	Petrol	JAMJ2C502BFA	JAMJ2C203ACA
		2013-10	2018-06	1.6	Petrol	GAMZIV125HV	-
		2013-10	2018-06	2	Petrol	GAMZIV125HV	-
	FJ Cruiser	2013-10	2018-06	1.6	Petrol	JAMJ2C502BFA	JAMJ2C203ACA
		2006-01	2018-06	4	Petrol	GAMZIV125FS	GAMZIV125EK
		2010-12	2018-06	4	Petrol	GAMZIV125FS	GAMZIV125G
	Hiace	2005-01	2018-06	2.7	Petrol	JAMJ2C502FA	-
		2005-01	2018-06	2.7	Petrol	JAMJ2C502FA	-
	Hilux	2005-06	2015-05	2	Petrol	JAMJ2C502HA	-
		2005-08	2015-05	2.7	Petrol	GAMZIV125FS	-
2015-05		2018-06	2.7	Petrol	JAMJ2C502PA	-	
2015-05		2018-06	2	Petrol	JAMJ2C502PA	-	
TOYOTA	Land Cruiser Prado	2009-08	2018-06	2.7	Petrol	GAMZIV125AP	GAMZIV125G
		2010-01	2018-06	3	Diesel	GAMZIV125AP	GAMZIV125G
	Prado	2010-01	2018-06	4	Petrol	GAMZIV125AP	GAMZIV125G
		2007-11	2018-06	5.7	Petrol	GAMZIV125DE	-
	Yaris	2006-01	2012-12	1.3	Petrol	JAMJ2C502EA	-
		2007-08	2013-12	1.5	Petrol	JAMJ2C502EA	-
		2010-12	2018-06	1.5	Petrol	JAMJ2C502EA	-

- Not available



Information in this publication was correct at time of publishing, June 2021.
Ford reserves the right to make any changes or updates at any time and without notice.
©Copyright Ford Motor Company
Not to be reproduced without the written permission of Ford.

Omnecraft™ is a trademark of Ford Motor Company